

Supplemental online content for:

First- and Second-Line Palliative Systemic Treatment Outcomes in a Real-World Metastatic Pancreatic Cancer Cohort

Esther N. Pijnappel, MD; Willemieke P.M. Dijksterhuis, MD; Lydia G. van der Geest, PhD; Judith de Vos-Geelen, MD, PhD; Jan Willem B. de Groot, MD, PhD; Marjolein Y.V. Homs, MD, PhD; Geert-jan Creemers, MD, PhD; Nadia Haj Mohammad, MD, PhD; Marc G. Besselink, MD, PhD; Hanneke W.M. van Laarhoven, MD, PhD; and Johanna W. Wilmink, MD, PhD; for the Dutch Pancreatic Cancer Group

J Natl Compr Canc Netw, doi: 10.6004/jnccn.2021.7028

eFigure 1: Flow Diagram of First- and Second-Line Systemic Treatment

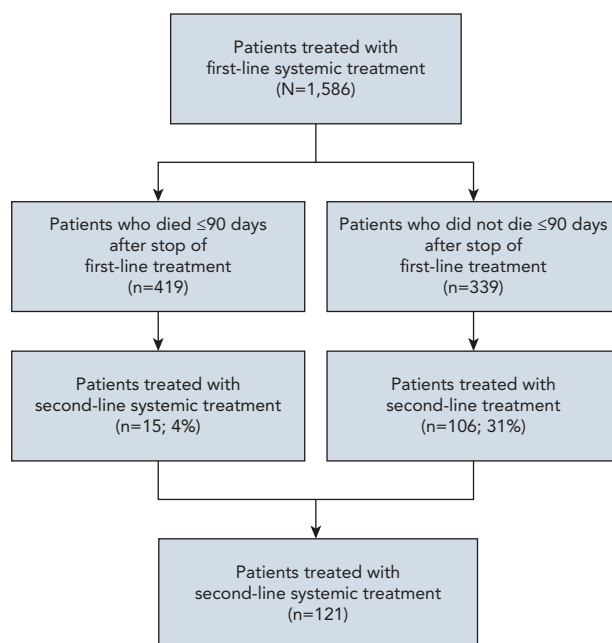
eFigure 2: Overall Survival in Patients Who Received First-Line Treatment Followed by Best Supportive Care and First- and Second-Line Treatment

eTable 1: ICD-10 Morphology Codes Included in Analyses

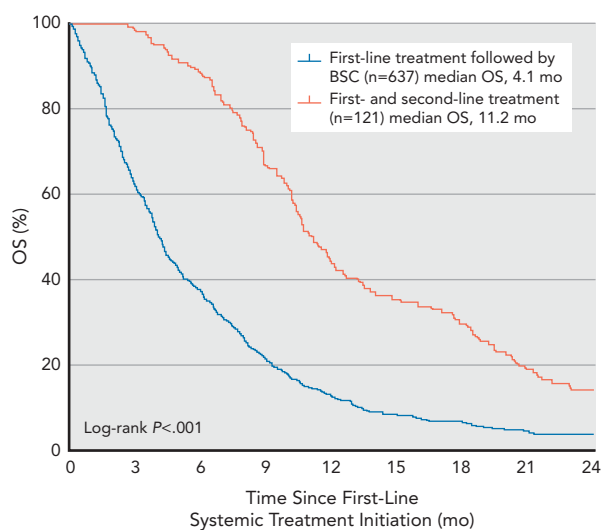
eTable 2: Multivariable Cox Regression Analyses of First-Line Systemic Therapy

eTable 3: Multivariable Cox Regression Analyses of Time to Failure of First-Line Systemic Therapy

eTable 4: Baseline Characteristics in Patients Who Received First-Line Treatment



eFigure 1. Flow diagram of first- and second-line systemic treatment.



eFigure 2. Kaplan-Meier curve displaying OS in patients who received first-line treatment followed by BSC and first- and second-line treatment. Abbreviations: BSC, best supportive care; OS, overall survival.

eTable 1. ICD-10 Morphology Codes Included in Analyses

Morphology Codes Included in Analyses
8000, 8001, 8010, 8011, 8012, 8020, 8021, 8022, 8031, 8032, 8033, 8035, 8046, 8070, 8071, 8072, 8140, 8141, 8143, 8144, 8145, 8154, 8163, 8201, 8211, 8255, 8260, 8263, 8310, 8440, 8480, 8481, 8490, 8500, 8510, 8521, 8523, 8560, 8570, 8572, 8575, 8576

eTable 2. Multivariable Cox Regression Analyses of First-Line Systemic Therapy

Parameter	HR (95% CI)	P Value
FOLFIRINOX (n=1,029)	Ref	
Gemcitabine (n=285)	1.983 (1.707–2.304)	<.0001
Gemcitabine + nab-paclitaxel (n=207)	1.200 (1.024–1.407)	.0244
Other (n=65)	1.042 (0.800–1.357)	.7594

Adjusted for sex, age, number of comorbidities, performance status, year of diagnosis, and number of metastases locations.
Abbreviations: FOLFIRINOX, irinotecan/oxaliplatin/5-FU; HR, hazard ratio.

eTable 3. Multivariable Cox Regression Analyses of Time to Failure of First-Line Systemic Therapy

Parameter	HR (95% CI)	P Value
FOLFIRINOX (n=458)	Ref	
Gemcitabine (n=194)	2.307 (1.882–2.828)	<.0001
Gemcitabine + nab-paclitaxel (n=72)	1.224 (0.922–1.624)	.1627
Other (n=34)	1.318 (0.855–2.032)	.2117

Adjusted for sex, age, number of comorbidities, performance status, year of diagnosis, and number of metastases locations.
Abbreviations: FOLFIRINOX, irinotecan/oxaliplatin/5-FU; HR, hazard ratio.

eTable 4. Baseline Characteristics in Patients Who Received First-Line Treatment

Variable	FOLFIRINOX	Gemcitabine + Nab-Paclitaxel	Gemcitabine	Other
Total, n	1,029	207	285	65
Sex				
Male	556 (54%)	104 (50%)	152 (53%)	40 (61%)
Female	473 (46%)	103 (50%)	133 (47%)	25 (39%)
Age				
Median (IQR), y	62 (56–68)	69 (62–74)	70 (65–74)	66 (57–72)
<55 y	225 (22%)	14 (7%)	14 (5%)	11 (18%)
55–64 y	391 (38%)	47 (23%)	57 (20%)	17 (27%)
65–74 y	371 (36%)	98 (47%)	144 (51%)	26 (39%)
≥75 y	42 (4%)	48 (23%)	70 (25%)	11 (15%)
Tumor location				
Head	393 (38%)	80 (39%)	115 (40%)	28 (42%)
Body	212 (21%)	46 (22%)	51 (18%)	9 (15%)
Tail	270 (26%)	49 (24%)	66 (23%)	15 (24%)
Overlapping sites	100 (10%)	24 (12%)	39 (14%)	3 (4%)
Pancreas NOS	54 (5%)	8 (4%)	14 (5%)	10 (14%)
Comorbidities				
0	597 (58%)	83 (40%)	113 (40%)	34 (52%)
1	299 (29%)	75 (36%)	107 (38%)	21 (34%)
2	73 (7%)	34 (16%)	57 (20%)	5 (7%)
Missing	60 (6%)	15 (7%)	8 (3%)	5 (7%)
WHO PS				
0–1	711 (69%)	134 (65%)	120 (42%)	31 (48%)
2	69 (7%)	32 (15%)	57 (20%)	8 (11%)
3–4	11 (1%)	0 (0%)	12 (4%)	2 (3%)
Unknown	238 (23%)	41 (20%)	96 (34%)	24 (38%)
Year of diagnosis				
2015	217 (21%)	33 (16%)	119 (42%)	16 (24%)
2016	243 (24%)	39 (19%)	75 (26%)	16 (24%)
2017	294 (29%)	74 (36%)	61 (21%)	13 (21%)
2018	275 (27%)	61 (29%)	30 (11%)	20 (31%)
Metastatic sites				
1	639 (62%)	128 (62%)	172 (60%)	36 (55%)
≥2	390 (38%)	79 (38%)	113 (40%)	29 (45%)
Median days between date of diagnosis and start of first-line treatment (IQR)	26 (17–38)	24 (15–36)	34 (20–56)	28 (17–55)

Abbreviations: FOLFIRINOX, irinotecan/oxaliplatin/5-FU; IQR, interquartile range; NOS, not otherwise specified; PS, performance status.