

Supplemental online content for:

## Similar Efficacy Observed for First-Line Immunotherapy in Racial/Ethnic Minority Patients With Metastatic NSCLC

Matthew Lee, MD, MPH; Jianyou Liu, MS; Emily Miao, PharmD; Shuai Wang, MD; Frank Zhang, MD; John Wei, MD; Julie Chung, CTR, BA; Xiaonan Xue, PhD; Balazs Halmos, MD; H. Dean Hosgood, PhD; and Haiying Cheng, MD, PhD

*J Natl Compr Canc Netw* 2023;21(12):1269–1280.e5

**eFigure 1:** Risk of Disease Progression Among Patients With Metastatic NSCLC Receiving First-Line Immunotherapy

**eTable 1:** OS, PFS, and TTD of Patients With Metastatic NSCLC Receiving First-Line Immunotherapy

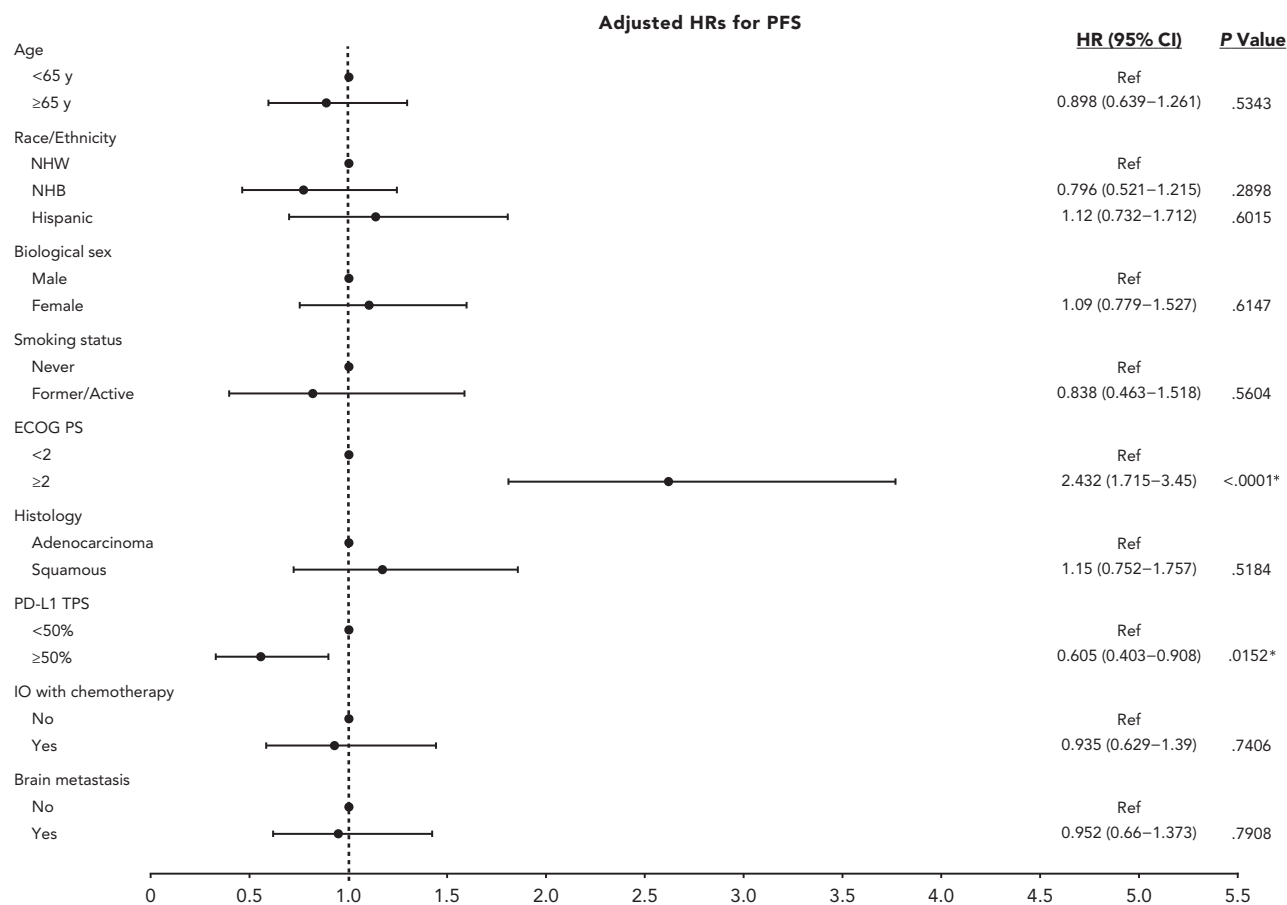
**eTable 2:** HRs for Overall Survival in Multivariable Cox Proportional Hazards Models

**eTable 3:** HRs for Progression-Free Survival in Multivariable Cox Proportional Hazards Models

**eTable 4:** HRs for Overall Survival in Race-Specific Multivariable Cox Proportional Hazards Models

**eTable 5:** HRs for Overall Survival in Ethnicity-Specific Multivariable Cox Proportional Hazards Models

**eTable 6:** Evaluation of Treatment-Related Adverse Events in Association With OS and PFS



**eFigure 1.** Risk of disease progression among patients with metastatic non–small cell lung cancer receiving first-line IO, adjusted for age, race/ethnicity, biological sex, smoking status, ECOG PS, histology, PD-L1 TPS, IO regimen, and presence of brain metastasis. Abbreviations: HR, hazard ratio; IO, immunotherapy; NHB, non-Hispanic Black; NHW, non-Hispanic White; PFS, progression-free survival; PS, performance status; TPS, tumor proportion score. \* $P < .05$ .

eTable 1. OS, PFS, and TTD of Patients With Metastatic NSCLC Receiving First-Line Immunotherapy							
	n (%)	OS, mo		PFS, mo		TTD, mo	
		Median (95% CI)	P Value	Median (95% CI)	P Value	Median (IQR)	P Value
Age at start of treatment			.3		.74		.29
<65 y	104 (41.9)	22.7 (16.7–43)		7.6 (5.6–12.7)		5 (2.1–12)	
≥65 y	144 (58.1)	20.7 (12.6–31.8)		7.9 (6.5–11.9)		4.3 (1.4–11)	
Biological sex			.75		.32		.91
Male	145 (58.5)	19.7 (14–31.8)		7.8 (6.5–12.8)		4.9 (1.9–10.5)	
Female	103 (41.5)	22.7 (15.4–43)		8.2 (5.3–11.3)		4.4 (1.4–13)	
Race/Ethnicity			.39		.29		.98
Non-Hispanic Black	97 (39.1)	26.3 (14–NA)		8.7 (7–14.8)		4.5 (1.4–12.5)	
Hispanic	75 (30.2)	23.5 (13.9–45.7)		6.7 (4.1–9.7)		4.9 (2.1–11.9)	
Non-Hispanic White	76 (30.7)	16.8 (12.8–27.7)		7.6 (5.6–14.6)		4.9 (1.7–9.5)	
Smoking status			.26		.25		.68
Former/Active	228 (91.9)	22.1 (16.7–33.1)		7.9 (6.7–11.3)		4.8 (1.7–11.7)	
Never	20 (8.1)	13.9 (4–NA)		6.3 (3.1–14.3)		4.3 (1.1–12.2)	
Median BMI (range), kg/m <sup>2</sup>	23.3 (14.1–41.4)						
BMI			.4		.01*		.02*
Underweight (<18.5 kg/m <sup>2</sup> )	32 (12.9)	12.1 (8.4–NA)		6.9 (3.2–23)		3.8 (1.8–8.5)	
Healthy (18.5–24.9 kg/m <sup>2</sup> )	116 (46.8)	20.2 (13.9–31.8)		6 (5–7.8)		3.7 (1.3–8)	
Overweight/Obese (≥25 kg/m <sup>2</sup> )	100 (40.3)	23.5 (16.4–44.7)		11.9 (8.2–18.3)		7 (2.6–13.6)	
Insurance			.15		.008*		.08
Commercial	50 (20.2)	18.5 (13–31.8)		7.6 (5.5–11.3)		4.9 (2.3–9.3)	
Medicare	120 (48.4)	35.4 (19.7–NA)		13.2 (7.6–20.4)		5.6 (2.1–14)	
Medicaid	59 (23.8)	16.4 (10.7–29.6)		6 (4–7.9)		3.7 (1.4–8.5)	
Dual Medicare/Medicaid	17 (6.8)	— <sup>a</sup>	—	—	—	—	—
None	2 (0.8)	—	—	—	—	—	—
Median annual household income <sup>b</sup> (range), USD	\$53,819 (\$23,337–\$193,085)						
Annual household income <sup>b</sup>			.73		.48		.19
<\$35,000	51 (20.6)	27.1 (16.7–59)		9.7 (5–20.3)		5.4 (2.1–13.1)	
\$35,000–\$49,999	59 (23.8)	19.8 (14–31.8)		6.9 (5.3–9.3)		3.7 (1.1–9)	
\$50,000–\$99,999	121 (48.8)	16.8 (12.6–45.7)		7.8 (6.5–12.8)		4.7 (1.5–10.6)	
≥\$100,000	17 (6.8)	27.7 (15.4–NA)		20.4 (6–NA)		7 (4.3–20.4)	
ECOG PS			<.0001*		<.0001*		<.0001*
<2	161 (64.9)	37.2 (20.7–NA)		12.8 (8.2–17.1)		5.9 (2.8–13.9)	
≥2	87 (35.1)	9 (6.3–15.7)		4.6 (3.4–7.6)		2.6 (0.7–7.3)	
Histology			.36		.27		.09
Adenocarcinoma	201 (81.1)	22.7 (16.7–35.4)		8.5 (7.3–12.8)		5.2 (1.9–11.9)	
Squamous	47 (18.9)	14.8 (7.8–59)		5.6 (3.4–8.2)		3.5 (1.4–7.9)	
PD-L1 TPS, 1% cutoff			.75		.01*		.82
<1%	57 (23.0)	19.4 (10.7–45.7)		6.5 (5.3–7.3)		4.3 (1.4–11.9)	
≥1%	178 (71.8)	23 (15.7–38.9)		8.7 (7.6–14.3)		5.1 (1.4–9)	
Missing	13 (5.2)						
PD-L1 TPS, 50% cutoff			.51		.03*		.67
<50%	136 (54.9)	20.7 (14.8–NA)		6.7 (5.4–8.2)		4.2 (1.5–10.1)	
≥50%	99 (39.9)	20.2 (12.8–37.2)		11.3 (7.8–20.4)		5.2 (1.4–12.2)	
Missing	13 (5.2)						

(continued on next page)

**eTable 1. OS, PFS, and TTD of Patients With Metastatic NSCLC Receiving First-Line Immunotherapy (cont.)**

	n (%)	OS, mo		PFS, mo		TTD, mo	
		Median (95% CI)	P Value	Median (95% CI)	P Value	Median (IQR)	P Value
Immunotherapy with chemotherapy			.66		.6		.18
No	109 (43.9)	23 (12.1–43)		8.2 (5.2–14.4)		4 (1.4–12.2)	
Yes	139 (56.1)	19.8 (16.1–33.1)		7.6 (6.5–11.4)		5.6 (2.1–10.6)	
Brain metastasis			.62		.7		.25
Yes	67 (27)	18.7 (11.5–27.7)		6.3 (5.3–12.8)		5.2 (2.6–13.5)	
No	181 (73)	23.5 (16.4–37.2)		7.9 (6.9–11.4)		4.5 (1.4–10.1)	

Abbreviations: BMI, body mass index; NA, not available; NSCLC, non–small cell lung cancer; OS, overall survival; PFS, progression-free survival; PS, performance status; TPS, tumor proportion score; TTD, time to discontinuation.

<sup>a</sup>Could not be calculated due to small sample size.

<sup>b</sup>Determined by the zip code of the patient's address listed in the electronic medical record, US Census Bureau data from the American Community Survey's 2021 estimates in USD amounts, and census-based geographic data.

\* $P < .05$ .

**eTable 2. HRs for Overall Survival in Multivariable Cox Proportional Hazards Models**

	HR (95% CI)	P Value
Age		
<65 y	Ref	
≥65 y	1.191 (0.840–1.688)	.3274
PD-L1 TPS		
<1	Ref	
≥1	0.884 (0.605–1.292)	.5250
Race/Ethnicity		
NHB	Ref	
Hispanic	0.947 (0.629–1.427)	.7944
NHW	1.226 (0.817–1.842)	.3256
ECOG PS		
<2	Ref	
≥2	2.580 (1.831–3.637)	<.0001*

Abbreviations: HR, hazard ratio; NHB, non-Hispanic Black; NHW, non-Hispanic White; PS, performance status; TPS, tumor proportion score.  
\* $P < .05$ .

**eTable 3. HRs for Progression-Free Survival in Multivariable Cox Proportional Hazards Models**

	HR (95% CI)	P Value
Age		
<65 y	Ref	
≥65 y	0.890 (0.662–1.196)	.4404
PD-L1 TPS		
<1	Ref	
≥1	0.641 (0.464–0.885)	.0070*
Race/Ethnicity		
NHB	Ref	
Hispanic	1.458 (1.038–2.047)	.0296*
NHW	1.313 (0.901–1.913)	.1563
ECOG PS		
<2	Ref	
≥2	2.390 (1.755–3.255)	<.0001*

Abbreviations: HR, hazard ratio; NHB, non-Hispanic Black; NHW, non-Hispanic White; PS, performance status; TPS, tumor proportion score.  
\* $P < .05$ .

**eTable 4. HRs for Overall Survival in Race-Specific Multivariable Cox Proportional Hazards Models**

	HR (95% CI)	P Value
Age		
<65 y	Ref	
≥65 y	1.181 (0.834–1.673)	.3481
PD-L1 TPS		
<1	Ref	
≥1	0.864 (0.593–1.259)	.4461
Race/Ethnicity		
Non-Black	Ref	
Black	0.940 (0.667–1.326)	.7264
ECOG PS		
<2	Ref	
≥2	2.530 (1.799–3.559)	<.0001*

Abbreviations: HR, hazard ratio; PS, performance status; TPS, tumor proportion score.  
\* $P < .05$ .

**eTable 5. HRs for Overall Survival in Ethnicity-Specific Multivariable Cox Proportional Hazards Models**

	HR (95% CI)	P Value
Age		
<65 y	Ref	
≥65 y	1.213 (0.857–1.715)	.2758
PD-L1 TPS		
<1	Ref	
≥1	0.885 (0.606–1.292)	.5269
Race/Ethnicity		
Non-Hispanic	Ref	
Hispanic	0.865 (0.602–1.243)	.4321
ECOG PS		
<2	Ref	
≥2	2.574 (1.827–3.626)	<.0001*

Abbreviations: HR, hazard ratio; PS, performance status; TPS, tumor proportion score.  
\* $P < .05$ .

**eTable 6. Evaluation of TRAEs in Association With OS and PFS**

	<b>n (%)</b>	<b>Median OS (95% CI)</b>	<b>P Value</b>	<b>Median PFS (95% CI)</b>	<b>P Value</b>
TRAE					.003*
Yes	90 (36.3)	38.9 (22.7–NA)	.02*	14.3 (8.2–22.4)	
No	158 (63.7)	16.3 (12.6–23.5)		6.7 (5.3–7.9)	
TRAE grade					.65
<3	52 (57.8)	26.3 (19.4–NA)	.72	14.4 (8.2–23.1)	
≥3	38 (42.2)	38.9 (19.7–59.0)		9.7 (6.0–24.1)	

Abbreviations: NA, not applicable; OS, overall survival; PFS, progression-free survival; TRAE, treatment-related adverse event.

\* $P < .05$ .