

Supplemental online content for:

Changes in Prognostic Beliefs of Patients With Metastatic Cancer and Their Association With Changing Health Status

Isabella Gupta, BSc; Eric Andrew Finkelstein, PhD, MHA; Semra Ozdemir, PhD; and Chetna Malhotra, MD

J Natl Compr Canc Netw 2023;21(10):1021–1028.e8

eFigure 1: Eligibility Criteria for COMPASS Study

eFigure 2: Evolution of Sample

eFigure 3: Transitions in Prognostic Belief Over Time

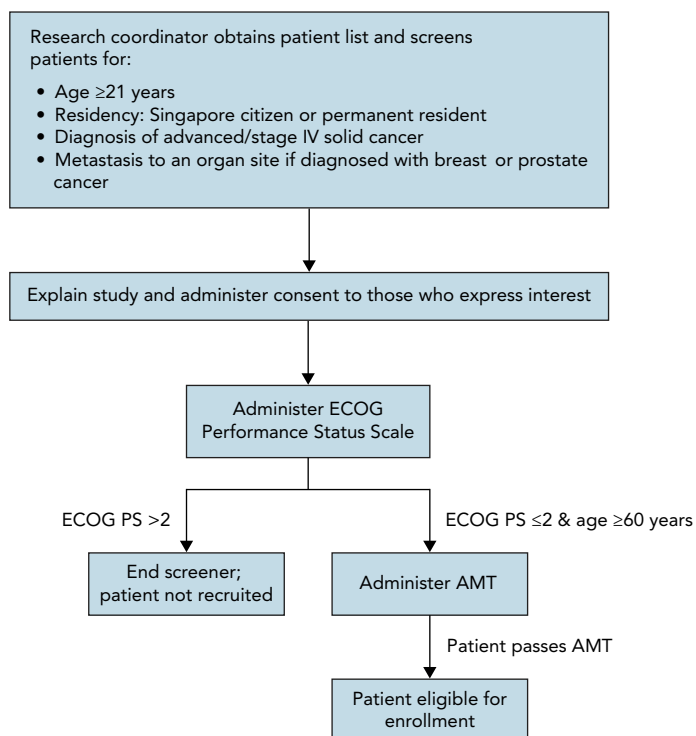
eTable 1: Association of Change in Prognostic Belief With Changes in Health Status

eTable 2A: Association of Prognostic Belief With Health Status

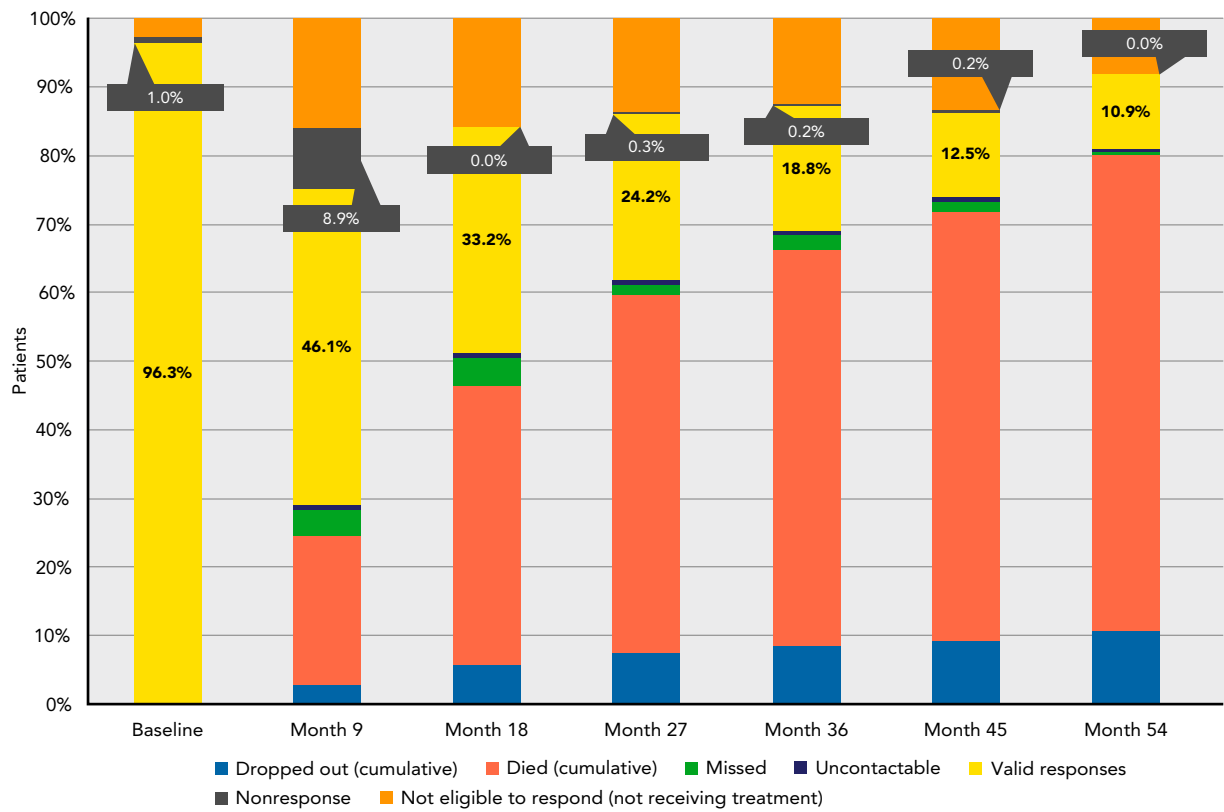
eTable 2B: Association of Change in Prognostic Belief with Change in Health Status

eTable 3A: Complete Case Analysis Assessing the Association Between Prognostic Belief and Health Status

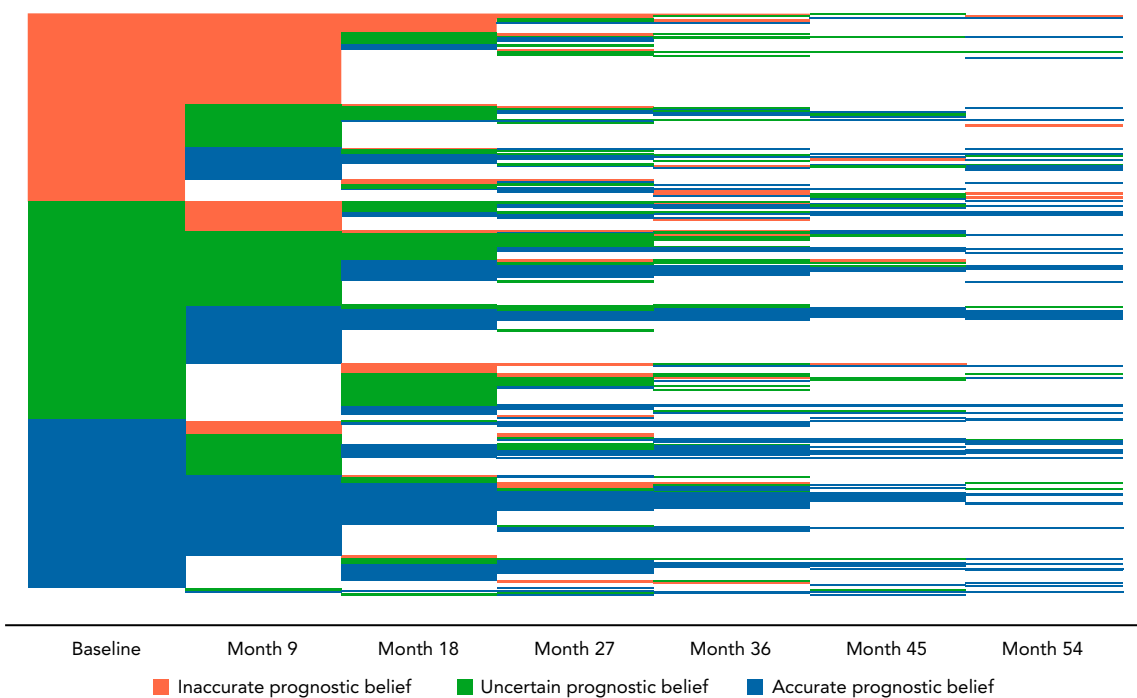
eTable 3B: Complete Case Analysis Assessing Association Between Change in Prognostic Belief and Change in Health Status



eFigure 1. Eligibility criteria for COMPASS study.
Abbreviations: AMT, Abbreviated Mental Test; PS, performance status.



eFigure 2. Evolution of sample.



eFigure 3. Transitions in prognostic belief over time.
 Note: Transitions presented only for patients who report prognostic belief at least twice (n=338 patients).

eTable 1. Association of Change in Prognostic Belief With Changes in Health Status^a			
	Model 1	Model 2	Model 3
	Change in Symptom Burden Score RRR (95% CI)	Change in Physical Well-Being Score RRR (95% CI)	Change in Functional Well-Being Score RRR (95% CI)
Change to inaccurate (n=65 observations)^b			
Change in symptom burden score	0.69 (0.41–1.16)		
Change in physical well-being score		1.65 (0.88–3.08)	
Change in functional well-being score			0.77 (0.43–1.37)
Number of responses	0.42*** (0.32–0.56)	0.42*** (0.32–0.56)	0.43*** (0.32–0.58)
Change to uncertain (n=131 observations)^b			
Change in symptom burden score	0.98 (0.65–1.46)		
Change in physical well-being score		0.94 (0.57–1.56)	
Change in functional well-being score			0.70 (0.43–1.15)
Number of responses	0.52*** (0.41–0.65)	0.52*** (0.41–0.65)	0.53*** (0.42–0.67)
Change to accurate (n=163 observations)^b			
Change in symptom burden score	1.63*** (1.13–2.34)		
Change in physical well-being score		0.93 (0.58–1.50)	
Change in functional well-being score			0.66* (0.41–1.06)
Number of responses	0.52*** (0.41–0.65)	0.52*** (0.41–0.65)	0.53*** (0.43–0.67)
Stay at inaccurate (n=79 observations)^b			
Change in symptom burden score	0.59** (0.35–0.99)		
Change in physical well-being score		1.74* (0.96–3.15)	
Change in functional well-being score			0.85 (0.49–1.49)
Number of responses	0.23*** (0.16–0.33)	0.23*** (0.16–0.34)	0.24*** (0.17–0.35)
Stay at uncertain (n=140 observations)^b			
Change in symptom burden score	0.79 (0.52–1.18)		
Change in physical well-being score		1.52 (0.92–2.52)	
Change in functional well-being score			0.90 (0.55–1.47)
Number of responses	0.46*** (0.36–0.59)	0.46*** (0.36–0.59)	0.47*** (0.37–0.59)
Observations	850	850	850

Age, level of education (primary and below; secondary; tertiary and above), and type of cancer (breast, gastrointestinal, genitourinary, respiratory, other) are controlled for in all models.

Abbreviation: RRR, relative risk ratio.

^a“No change” is disaggregated into “stay at unsure,” “stay at inaccurate,” and “stay at accurate.”

^bReference category is “stay at accurate.”

* $P < .1$; ** $P < .05$; *** $P < .01$.

eTable 2A. Association of Prognostic Belief With Health Status (Fixed Effects Model)

	Model 1	Model 2	Model 3
	Symptom Burden Score RRR (95% CI)	Physical Well-Being Score RRR (95% CI)	Functional Well-Being Score RRR (95% CI)
Inaccurate prognostic belief (n=178 observations)^a			
Symptom burden score	0.87** (0.81–0.92)		
Physical well-being score		1.11** (1.03–1.19)	
Functional well-being score			1.02 (0.96–1.08)
Recent UHA	1.67 (0.64–4.33)	1.38 (0.58–3.28)	1.24 (0.55–2.79)
Number of responses	0.44** (0.28–0.67)	0.45** (0.30–0.67)	0.48** (0.32–0.71)
Age	1.28 (0.85–1.94)	1.08 (0.75–1.56)	0.98 (0.70–1.38)
Palliative care visits	2.05 (0.34–12.33)	2.05 (0.41–10.17)	1.91 (0.39–9.44)
Uncertain prognostic belief (n=304 observations)^a			
Symptom burden score	0.91** (0.88–0.95)		
Physical well-being score		1.06* (1.01–1.11)	
Functional well-being score			1.01 (0.97–1.06)
Recent UHA	1.81 (0.84–3.92)	1.58 (0.78–3.21)	1.44 (0.77–2.72)
Number of responses	0.79 (0.57–1.10)	0.78 (0.57–1.07)	0.78 (0.57–1.06)
Age	0.95 (0.66–1.37)	0.86 (0.60–1.22)	0.83 (0.59–1.19)
Palliative care visits	0.77 (0.31–1.88)	0.76 (0.32–1.80)	0.77 (0.33–1.77)
Observations	842	842	842

Standard errors clustered by patient.

Abbreviations: RRR, relative risk ratio; UHA, unplanned hospital admission.

^aReference category is “accurate prognostic belief.”

* $P < .05$; ** $P < .01$.

eTable 2B. Association of Change in Prognostic Belief with Change in Health Status (Fixed Effects Model)			
	Model 1	Model 2	Model 3
	Change in Symptom Burden Score RRR (95% CI)	Change in Physical Well-Being Score RRR (95% CI)	Change in Functional Well-Being Score RRR (95% CI)
Change to inaccurate (n=49 observations)^a			
Change in symptom burden score	0.95 (0.60–1.50)		
Change in physical well-being score		1.02 (0.59–1.77)	
Change in functional well-being score			0.68 (0.36–1.30)
Number of responses	0.72 (0.35–1.47)	0.72 (0.35–1.49)	0.74 (0.36–1.55)
Age	1.16 (0.50–2.71)	1.15 (0.48–2.71)	1.11 (0.48–2.58)
Change to uncertain (n=108 observations)^a			
Change in symptom burden score	1.16 (0.74–1.81)		
Change in physical well-being score		0.75 (0.45–1.23)	
Change in functional well-being score			0.77 (0.52–1.12)
Number of responses	0.89 (0.55–1.45)	0.90 (0.55–1.47)	0.93 (0.57–1.52)
Age	1.03 (0.59–1.80)	1.01 (0.57–1.77)	0.98 (0.56–1.71)
Change to accurate (n=133 observations)^a			
Change in symptom burden score	1.62** (1.18–2.23)		
Change in physical well-being score		0.76 (0.53–1.10)	
Change in functional well-being score			0.74 (0.52–1.06)
Number of responses	0.76 (0.50–1.15)	0.75 (0.50–1.13)	0.77 (0.51–1.16)
Age	1.21 (0.76–1.93)	1.25 (0.78–1.98)	1.24 (0.78–1.98)
Observations	554	554	554

Standard errors clustered by patient.

Abbreviation: RRR, relative risk ratio.

^aReference category is "no change."

* $P < .05$; ** $P < .01$.

eTable 3A. Complete Case Analysis Assessing the Association Between Prognostic Belief and Health Status

	Model 1	Model 2	Model 3
	Symptom Burden Score RRR (95% CI)	Physical Well-Being Score RRR (95% CI)	Functional Well-Being Score RRR (95% CI)
Inaccurate prognostic belief (n=228 observations) ^a			
Symptom burden score	0.89** (0.85–0.92)		
Physical well-being score		1.09** (1.04–1.14)	
Functional well-being score			1.10** (1.05–1.14)
Recent UHA	2.75** (1.43–5.28)	2.43** (1.28–4.63)	2.32** (1.22–4.40)
Number of responses	0.58** (0.49–0.68)	0.53** (0.45–0.63)	0.55** (0.47–0.66)
Palliative care visits	0.45 (0.16–1.23)	0.41 (0.15–1.13)	0.41 (0.15–1.15)
Uncertain prognostic belief (n=34 observations) ^a			
Symptom burden score	0.91** (0.88–0.94)		
Physical well-being score		1.07** (1.03–1.11)	
Functional well-being score			1.03 (0.99–1.07)
Recent UHA	2.09* (1.14–3.84)	1.87* (1.03–3.40)	1.64 (0.91–2.96)
Number of responses	0.71** (0.62–0.81)	0.66** (0.58–0.76)	0.65** (0.57–0.75)
Palliative care visits	0.56 (0.24–1.30)	0.52 (0.23–1.20)	0.48 (0.21–1.10)
Observations	1,053	1,053	1,053

Age, level of education (primary and below; secondary; tertiary and above), and type of cancer (breast, gastrointestinal, genitourinary, respiratory, other) are controlled for in all models.

Abbreviations: RRR, relative risk ratio; UHA, unplanned hospital admission.

^aReference category is “accurate prognostic belief.”

* $P < .05$; ** $P < .01$.

eTable 3B. Complete Case Analysis Assessing Association Between Change in Prognostic Belief and Change in Health Status			
	Model 1	Model 2	Model 3
	Change in Symptom Burden Score RRR (95% CI)	Change in Physical Well-Being Score RRR (95% CI)	Change in Functional Well-Being Score RRR (95% CI)
Change to inaccurate (n=37 observations)^a			
Change in symptom burden score	0.76 (0.44–1.30)		
Change in physical well-being score		1.35 (0.73–2.50)	
Change in functional well-being score			0.78 (0.44–1.37)
Number of responses	0.73* (0.55–0.97)	0.74* (0.56–0.98)	0.75 (0.57–1.00)
Change to uncertain (n=91 observations)^a			
Change in symptom burden score	1.07 (0.76–1.52)		
Change in physical well-being score		0.71 (0.47–1.08)	
Change in functional well-being score			0.72 (0.49–1.08)
Number of responses	0.88 (0.73–1.05)	0.88 (0.73–1.06)	0.90 (0.75–1.08)
Change to accurate (n=107 observations)^a			
Change in symptom burden score	1.70** (1.25–2.32)		
Change in physical well-being score		0.79 (0.53–1.17)	
Change in functional well-being score			0.73 (0.50–1.07)
Number of responses	0.89 (0.75–1.05)	0.89 (0.75–1.05)	0.90 (0.76–1.07)
Observations	571	571	571

Age, level of education (primary and below; secondary; tertiary and above), and type of cancer (breast, gastrointestinal, genitourinary, respiratory, other) are controlled for in all models.

Abbreviation: RRR, relative risk ratio.

^aReference category is "no change."

* $P < .05$; ** $P < .01$.