

Supplemental online content for:

## Impact of Cumulative Chemotherapy Dose on Survival With Adjuvant FEC-D Chemotherapy for Breast Cancer

Zachary Veitch, MSc, MD; Omar F. Khan, MD; Derek Tilley, MSc; Patricia A. Tang, MD; Domen Ribnikar, MD; Douglas A. Stewart, MD; Xanthoula Kostaras, MSc; Karen King, MD; and Sasha Lupichuk, MD

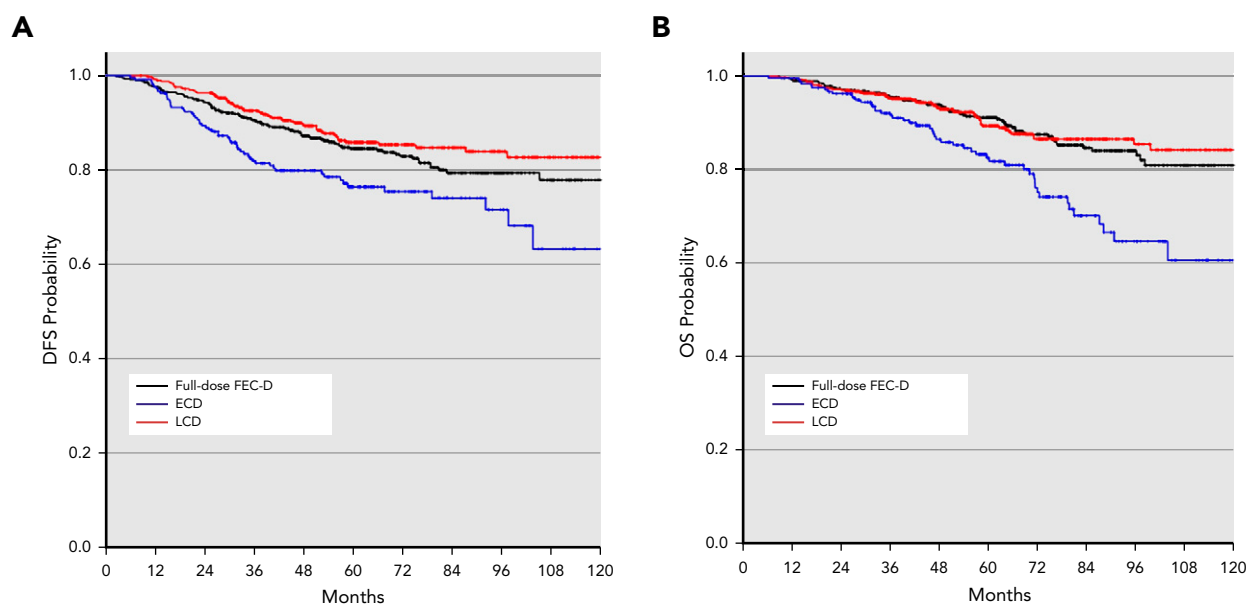
*J Natl Compr Canc Netw* 2019;17(8):957–967

**eFigure 1:** Kaplan-Meier Curves in Full-Dose FEC-D, ECD, and LCD Cohorts

**eTable 1:** Holm-Sidak Pairwise Comparisons for DFS and OS

**eTable 2:** Univariate and Multivariate Analyses of DFS

**eTable 3:** Univariate and Multivariate Analyses of OS



**Figure 1.** Kaplan-Meier curves of (A) DFS and (B) OS for full-dose, ECD (any reduction in FEC ± any reduction in D), and LCD (full-dose FEC + any reduction in D) cohorts.  
 Abbreviations: D, docetaxel; DFS, disease-free survival; ECD, early cumulative dose reduction; FEC, 5-fluorouracil/epirubicin/cyclophosphamide; LCD, late cumulative dose reduction; OS, overall survival.

Table 1. Holm-Sidak Pairwise Comparisons of DFS and OS			
	Full Dose	Any FEC ± Any D Reduction (ECD) P Value	FEC=100% + Any D Reduction (LCD) P Value
<b>DFS</b>			
Full dose	NA	.01*	.186
Any FEC ± any D reduction (ECD)	NA	NA	NA
FEC=100%, any D reduction (LCD)	NA	<.001*	NA
<b>OS</b>			
Full dose	NA	<.001*	.739
Any FEC ± any D reduction (ECD)	NA	NA	NA
FEC=100%, any D reduction (LCD)	NA	<.001*	NA

Abbreviations: D, docetaxel; DFS, disease-free survival; ECD, early cumulative dose reduction; FEC, 5-fluorouracil/epirubicin/cyclophosphamide; LCD, late cumulative dose reduction; NA, not applicable; OS, overall survival.  
 \*Significant for  $P < .05$ .

**eTable 2. Univariate and Multivariate Analyses of DFS**

Variables	Univariate Analysis		Multivariate Analysis	
	HR (95% CI)	P Value	HR (95% CI)	P Value
TCD				
FEC-D $\geq$ 85%	Ref		Ref	
FEC-D<85%	1.471 (1.048–2.065)	.026*	1.449 (1.017–2.065)	.040*
uCCI score				
0	Ref		Ref	
1	1.157 (0.719–1.861)	.548	1.276 (0.786–2.071)	.325
$\geq$ 2	1.625 (1.058–2.495)	.027*	1.686(1.082–2.627)	.021*
T stage				
T1	Ref		Ref	
T2	2.791 (1.882–4.141)	<.001*	2.245 (1.501–3.358)	<.001*
T3	5.528 (3.393–9.006)	<.001*	3.856 (2.297–6.473)	<.001*
Nodal status				
N0	Ref		Ref	
N1	0.748 (0.434–1.292)	.298	1.144 (0.629–2.081)	.659
$\geq$ N2	1.928 (1.120–3.321)	.018*	2.146 (1.164–3.956)	.014*
Hormone receptor status				
ER+ and/or PR+	Ref		Ref	
ER– and PR–	1.846 (1.326–2.570)	<.001*	1.672 (1.156–2.419)	.006*
Menopausal status				
Premenopausal	Ref		Ref	
Menopausal	1.024 (0.776–1.351)	.867	1.207 (0.896–1.627)	.216
Age				
$\geq$ 65 y	Ref		Ref	
<65 y	1.596 (0.971–2.621)	.065	2.369 (1.363–4.116)	.002*
Tumor grade				
1	Ref		Ref	
2	2.889 (1.164–7.168)	.022*	1.873 (0.747–4.701)	.181
3	6.057 (2.479–14.799)	<.001*	3.323 (1.332–8.290)	.01*
Lymphovascular invasion				
Absent	Ref		Ref	
Present	2.096 (1.524–2.884)	<.001*	1.620 (1.135–2.311)	.008*
G-CSF				
Yes	Ref		Ref	
No	1.123 (0.776–1.625)	.537	1.062 (0.731–1.544)	.752
Dose delay				
<14 d	Ref		Ref	
$\geq$ 14 d	0.950 (0.645–1.400)	.796	1.014 (0.685–1.503)	.944

Abbreviations: D, docetaxel; DFS, disease-free survival; ER, estrogen receptor; FEC, 5-fluorouracil/epirubicin/cyclophosphamide; G-CSF, granulocyte colony-stimulating factor; HR, hazard ratio; PR, progesterone receptor; TCD, total cumulative dose; uCCI, updated Charlson comorbidity index.

\*Significant for  $P<.05$ .

**eTable 3. Univariate and Multivariate Analyses of OS**

Variables	Univariate Analysis		Multivariate Analysis	
	HR (95% CI)	P Value	HR (95% CI)	P Value
<b>TCD</b>				
FEC-D $\geq$ 85%	Ref		Ref	
FEC-D<85%	1.795 (1.252–2.573)	.001*	1.491 (1.012–2.196)	.043*
<b>uCCI score</b>				
0	Ref		Ref	
1	1.503 (0.904–2.499)	.117	1.634 (0.969–2.754)	.065
$\geq$ 2	2.449 (1.602–3.744)	<.001*	2.367 (1.506–3.720)	<.001*
<b>T stage</b>				
T1	Ref		Ref	
T2	2.323 (1.513–3.568)	<.001*	1.785 (1.148–2.774)	.01*
T3	5.144 (3.029–8.738)	<.001*	3.407 (1.926–6.028)	<.001*
<b>Nodal status</b>				
N0	Ref		Ref	
N1	0.744 (3.940–1.406)	.363	1.097 (0.544–2.211)	.796
$\geq$ N2	1.977 (1.053–3.714)	.034*	2.096 (1.028–4.273)	.042*
<b>Hormone receptor status</b>				
ER+ and/or PR+	Ref		Ref	
ER– and PR–	2.168 (1.517–3.100)	<.001*	1.709 (1.140–2.561)	.009*
<b>Menopausal status</b>				
Premenopausal	Ref		Ref	
Menopausal	1.313 (0.954–1.806)	.094	1.468 (1.039–2.074)	.029*
<b>Age</b>				
$\geq$ 65 y	Ref		Ref	
<65 y	1.200 (0.726–1.983)	.478	2.122 (1.201–3.749)	.01*
<b>Tumor grade</b>				
1	Ref		Ref	
2	5.058 (1.229–20.825)	.025*	3.297 (0.790–13.751)	.102
3	12.922 (3.191–52.330)	<.001*	7.347 (1.776–30.395)	.006*
<b>Lymphovascular invasion</b>				
Absent	Ref		Ref	
Present	2.108 (1.469–3.023)	<.001*	1.578 (1.046–2.381)	.03*
<b>G-CSF</b>				
Yes	Ref		Ref	
No	1.357 (0.911–2.021)	.133	1.232 (0.821–1.848)	.314
<b>Dose delay</b>				
<14 d	Ref		Ref	
$\geq$ 14 d	1.199 (0.798–1.802)	.382	1.225 (0.807–1.858)	.341

Abbreviations: D, docetaxel; ER, estrogen receptor; FEC, 5-fluorouracil/epirubicin/cyclophosphamide; G-CSF, granulocyte colony-stimulating factor; HR, hazard ratio; OS, overall survival; PR, progesterone receptor; TCD, total cumulative dose; uCCI, updated Charlson comorbidity index.

\*Significant for  $P < .05$ .