

Supplemental online content for:

Real-World Outcomes of Adjuvant Chemotherapy for Node-Negative and Node-Positive HER2-Positive Breast Cancer

Zachary Veitch, MD; Omar F. Khan, MD; Derek Tilley, MSc; Domek Ribnikar, MD; Xanthoula Kostaras, MSc; Karen King, MD; Patricia Tang, MD; and Sasha Lupichuk, MD, MSc

J Natl Compr Canc Netw 2019;17(1):47–56

eAppendix 1: Relapse Characteristics for Node-Negative Cohort

eAppendix 2: Relapse Characteristics for Node-Positive Cohort

eAppendix 3: Multivariable Analysis of DFS and BCSS for Node-Positive Cohort

eAppendix 4: Kaplan-Meier Plots for HER2-Positive, Node-Positive Cohort,
Hormone Receptor–Positive/–Negative Subgroups

eAppendix 1. Relapse Characteristics for Node-Negative Cohort					
	DCH (N=111)		TCH (N=371)		P Value
	n	%	n	%	
Total relapses	8		22		
Location					.812
Local	2	25.0	4	18.2	
Bone only	0	0.0	2	9.1	
Visceral only	3	37.5	9	40.9	
Bone and visceral	3	37.5	6	27.3	
Brain	0	0	7	31.8	
Unknown	0	0	1	4.5	

Abbreviations: DCH, docetaxel/cyclophosphamide; TCH, docetaxel/carboplatin/trastuzumab.

eAppendix 2. Relapse Characteristics for Node-Positive Cohort

	FEC-DH (N=146)		TCH (N=315)		P Value
	n	%	n	%	
Total relapses	13		39		
Location					.240
Local	5	38.4	5	12.8	
Bone only	1	8.0	5	12.8	
Visceral only	4	30.6	13	33.3	
Bone and visceral	3	23.0	16	41.0	
Brain	3	23.0	10	25.6	
Unknown	0	0	0	0	

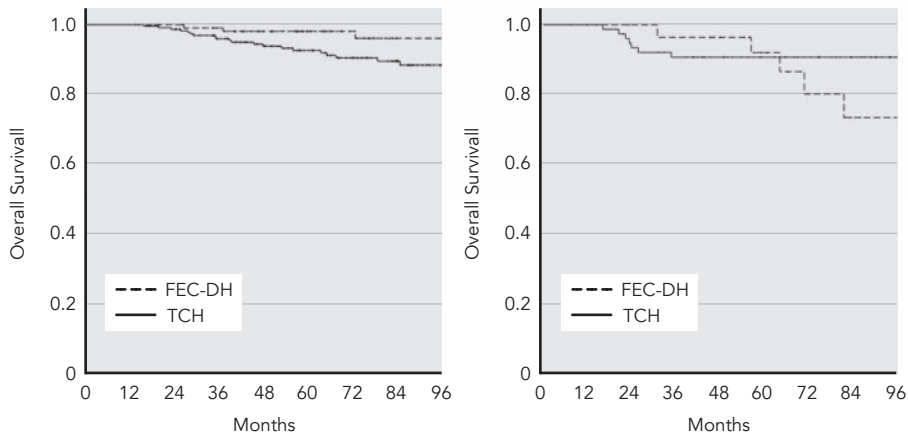
Abbreviations: FEC-DH, fluorouracil/epirubicin/cyclophosphamide followed by docetaxel/trastuzumab; TCH, docetaxel/carboplatin/trastuzumab.

eAppendix 3. Multivariable Analysis of DFS and BCSS for Node-Positive Cohort						
Patient Characteristics	DFS			BCSS		
	HR	95% CI	P Value	HR	95% CI	P Value
Chemotherapy						
FEC-DH		Ref			Ref	
TCH	1.605	0.834–3.089	.157	2.063	0.873–4.877	.099
Menopausal status						
Postmenopausal		Ref			Ref	
Premenopausal	1.067	0.601–1.895	.826	0.749	0.368–1.524	.426
U-CCI						
0		Ref			Ref	
≥1	1.369	0.651–2.883	.408	0.950	0.357–2.529	.918
Grade						
2		Ref			Ref	
3	1.357	0.623–2.956	.441	2.252	0.673–7.539	.188
LVI						
Absent		Ref			Ref	
Present	1.491	0.696–3.193	.304	1.992	0.730–5.436	.178
T stage						
T1		Ref			Ref	
T2	1.626	0.754–3.504	.215	1.450	0.565–3.726	.440
T3	2.390	0.891–6.408	.083	1.779	0.520–6.084	.359
N stage						
N1		Ref			Ref	
N2	3.037	1.482–6.224	.002 ^a	3.467	1.473–8.161	.004 ^a
N3	3.639	1.672–7.921	.001 ^a	2.958	1.101–7.947	.031 ^a
Hormone receptor status						
ER+/PR+		Ref			Ref	
ER-/PR-	1.402	0.744–2.641	.296	1.323	0.616–2.840	.473
Radiotherapy						
Yes		Ref			Ref	
No	3.510	0.154–0.800	.013 ^a	0.787	0.217–2.856	.716

Abbreviations: BCSS, breast cancer–specific survival; DFS, disease-free survival; ER, estrogen receptor; FEC-DH, fluorouracil/epirubicin/cyclophosphamide followed by docetaxel/trastuzumab; HR, hazard ratio; LVI, lymphovascular invasion; PR, progesterone receptor; TCH, docetaxel/carboplatin/trastuzumab; U-CCI, updated Charlson comorbidity index.

^aP<.05.

4 - Veitch et al



eAppendix 4. Kaplan-Meier plots for (A) HER2-positive, node-positive, hormone receptor-positive and (B) HER2-positive, node-positive, hormone receptor-negative subgroups. Abbreviations: FEC-DH, fluorouracil/epirubicin/cyclophosphamide followed by docetaxel/trastuzumab; TCH, docetaxel/carboplatin/trastuzumab.