

Supplemental online content for:

Dose Delays, Dose Reductions, and Relative Dose Intensity in Patients With Cancer Who Received Adjuvant or Neoadjuvant Chemotherapy in Community Oncology Practices

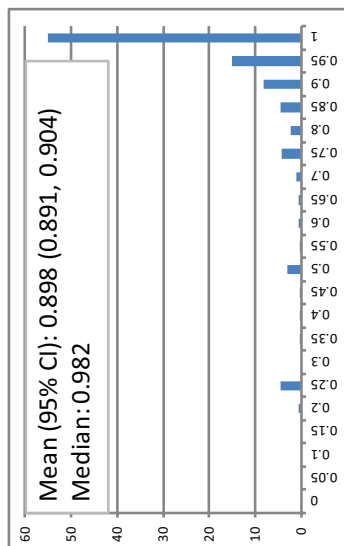
Neelima Denduluri, MD; Debra A. Patt, MD; Yunfei Wang, PhD; Menaka Bhor, PhD; Xiaoyan Li, PhD; Anne M. Favret, MD; Phuong Khanh Morrow, MD; Richard L. Barron, MS; Lina Asmar, PhD; Shanmugapriya Saravanan, MS; Yanli Li, MD, PhD; Jacob Garcia, MD; and Gary H. Lyman, MD, MPH

J Natl Compr Canc Netw 2015;1383–1393

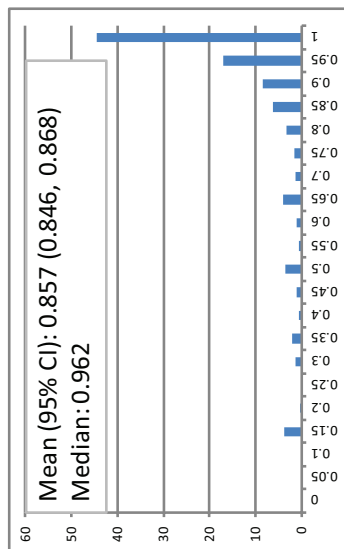
- **eFigure 1:** Distribution of Relative Dose Intensity by Standard Tumor Regimen Cohort
- **eTable 1:** Standard Dose of Myelosuppressive Agents, Number of Cycles, and Cycle Length for Standard Tumor Regimens

Figure 1 Distribution of RDI by standard tumor regimen cohort. Y-axis: percentage of patients; X-axis: RDI. Data were divided into bins as Bin 0: RDI <0.025; Bin 0.05: 0.025≤RDI<0.075; Bin 0.95: 0.925≤RDI<0.975; Bin 1: RDI≥0.975; observations with RDI >1 were counted in Bin 1.

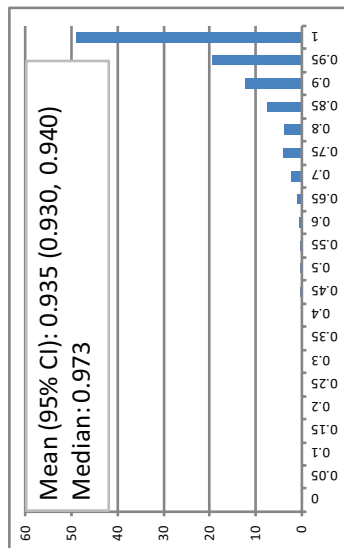
Breast Cancer: TC (4-cycle)



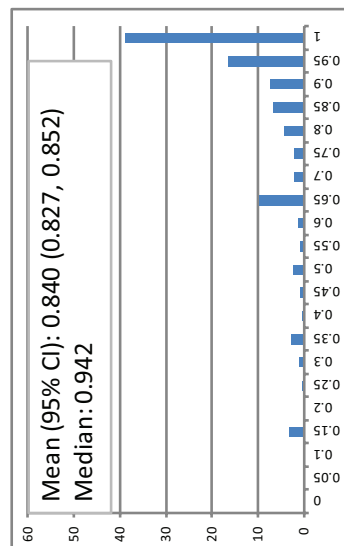
Breast Cancer: TAC



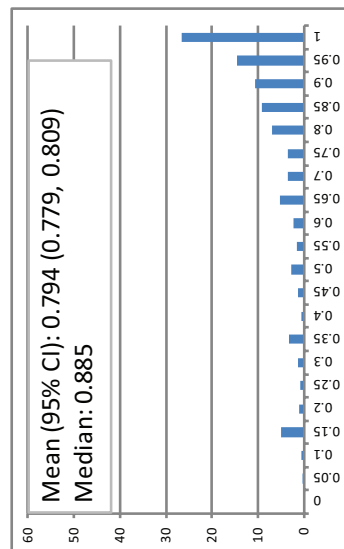
Breast Cancer: Dose-Dense AC → q2wk Paclitaxel



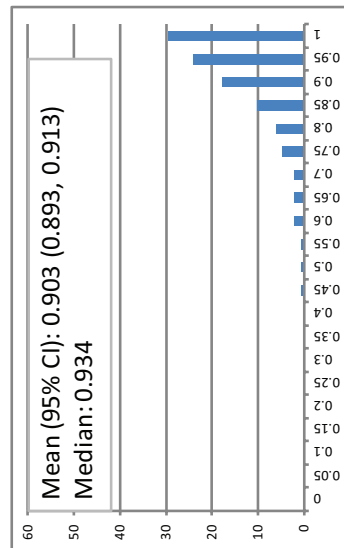
Breast Cancer: TC (6-cycle)



Breast Cancer: TCH



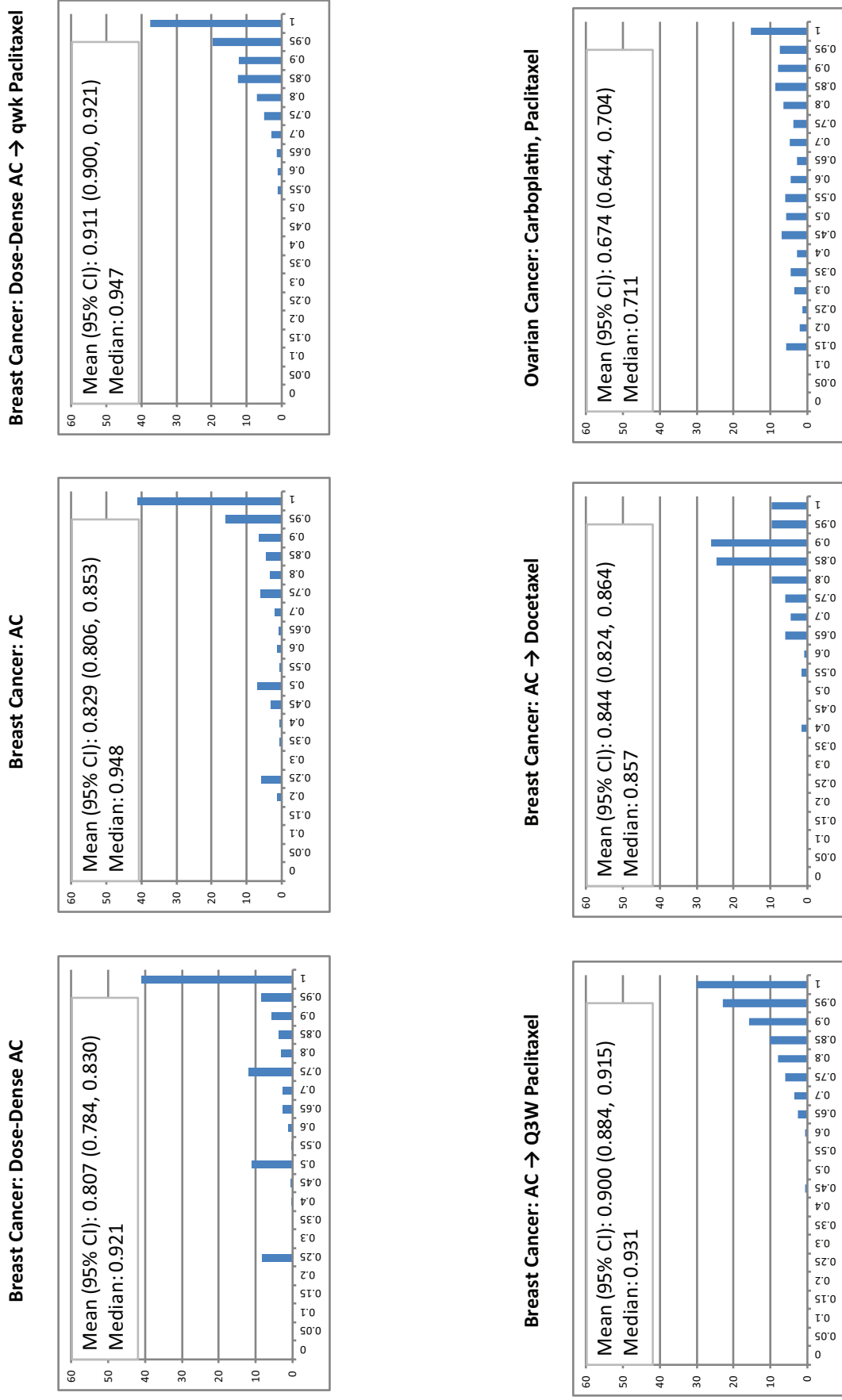
Breast Cancer: AC → qwk Paclitaxel



(continued on the next page)

Abbreviations: 5-FU, 5-fluorouracil; ABVD, doxorubicin, bleomycin, vinblastine, dacarbazine; AC, doxorubicin, cyclophosphamide; CRC, colorectal cancer; FOLFOX4/mFOLFOX6, folinic acid, 5-fluorouracil, oxaliplatin; NHL, non-Hodgkin's lymphoma; NSCLC, non-small cell lung cancer; R-CHOP/CHOP, cyclophosphamide, doxorubicin, vincristine, prednisone ± rituximab; RCVP/CVP, cyclophosphamide, vincristine, prednisone ± rituximab; RDI, relative dose intensity; TAC, docetaxel, cyclophosphamide; TC, docetaxel, cyclophosphamide; TCH, docetaxel, carboplatin, trastuzumab.

Figure 1 Distribution of RDI by standard tumor regimen cohort. Y-axis: percentage of patients; X-axis: percentage of patients; RDI. Data were divided into bins as Bin 0: RDI <0.025; Bin 0.05: 0.025≤RDI<0.075; Bin 0.95: 0.925≤RDI<0.975; Bin 1: RDI≥0.975; observations with RDI >1 were counted in Bin 1.

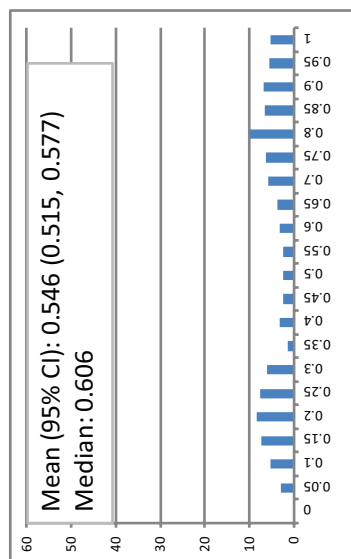


(continued on the next page)

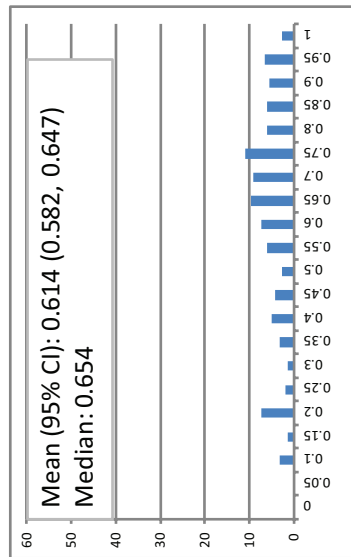
Abbreviations: 5-FU, 5-fluorouracil; ABVD, doxorubicin, bleomycin, vinblastine, dacarbazine; AC, doxorubicin, cyclophosphamide; CRC, colorectal cancer; FOLFOX4/mFOLFOX6, folinic acid, 5-fluorouracil, oxaliplatin; NHL, non-Hodgkin's lymphoma; NSCLC, non-small cell lung cancer; R-CHOP/CHOP, cyclophosphamide, doxorubicin, vincristine, prednisone ± rituximab; RCVP/CVP, cyclophosphamide, vincristine, prednisone ± rituximab; RDI, relative dose intensity; TAC: docetaxel, doxorubicin, cyclophosphamide; TC, docetaxel, cyclophosphamide; TCH, docetaxel, carboplatin, trastuzumab.

Figure 1 Distribution of RDI by standard tumor regimen cohort. Y-axis: percentage of patients; X-axis: RDI. Data were divided into bins as Bin 0: RDI <0.025; Bin 0.05: 0.025≤RDI<0.075; Bin 0.1: 0.075≤RDI<0.125; Bin 0.15: 0.125≤RDI<0.175; Bin 0.2: 0.175≤RDI<0.225; Bin 0.25: 0.225≤RDI<0.275; Bin 0.3: 0.275≤RDI<0.325; Bin 0.35: 0.325≤RDI<0.375; Bin 0.4: 0.375≤RDI<0.425; Bin 0.45: 0.425≤RDI<0.475; Bin 0.5: 0.475≤RDI<0.525; Bin 0.55: 0.525≤RDI<0.575; Bin 0.6: 0.575≤RDI<0.625; Bin 0.65: 0.625≤RDI<0.675; Bin 0.7: 0.675≤RDI<0.725; Bin 0.75: 0.725≤RDI<0.775; Bin 0.8: 0.775≤RDI<0.825; Bin 0.85: 0.825≤RDI<0.875; Bin 0.9: 0.875≤RDI<0.925; Bin 0.95: 0.925≤RDI<0.975; Bin 1: RDI≥0.975; observations with RDI >1 were counted in Bin 1.

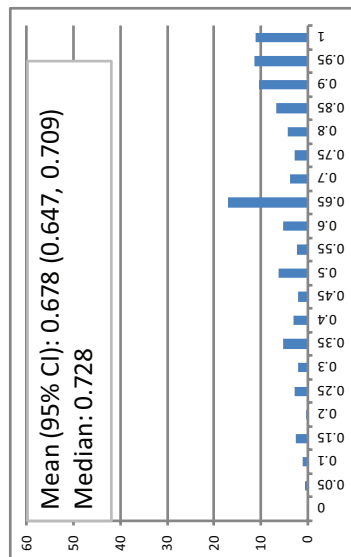
NSCLC: Carboplatin, Paclitaxel



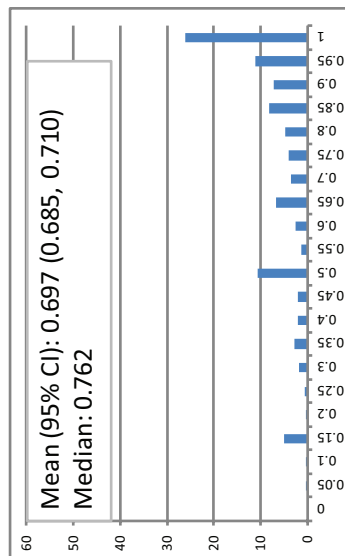
NSCLC: Cisplatin, Vinorelbine



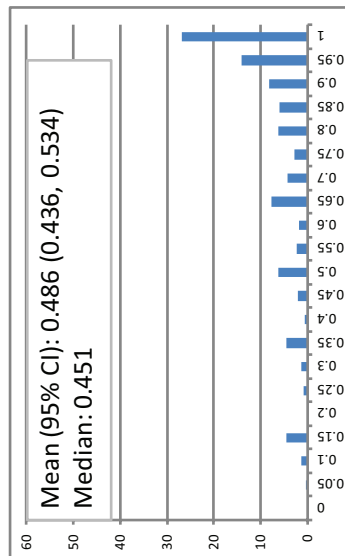
CRC: FOLFOX4



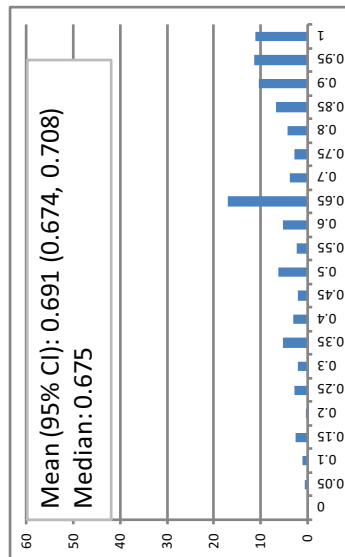
CRC: mFOLFOX6



CRC: 5-FU (q8wk)



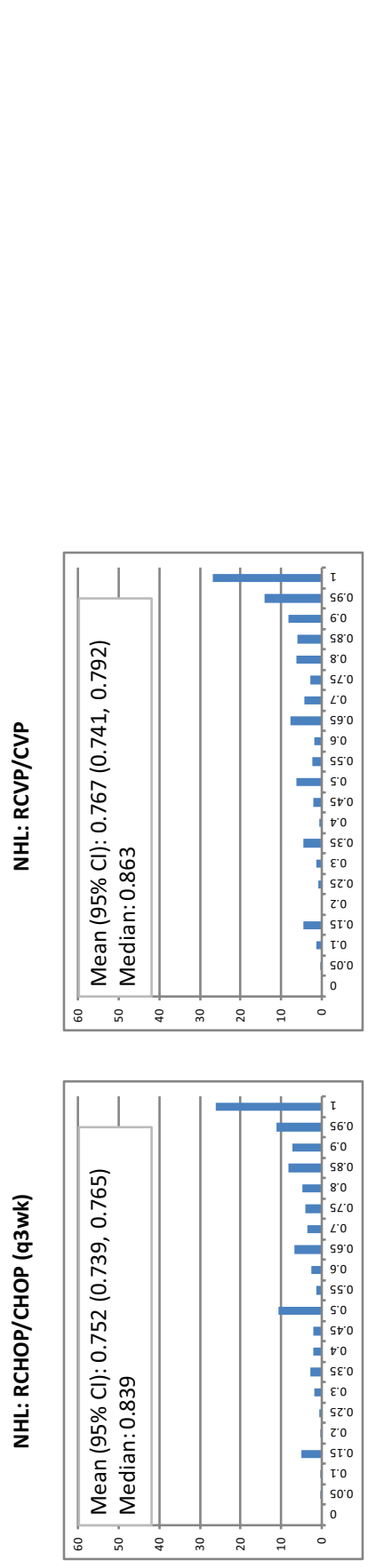
Hodgkins Lymphoma: ABVD



(continued on the next page)

Abbreviations: 5-FU, 5-fluorouracil; ABVD, doxorubicin, bleomycin, vinblastine, dacarbazine; AC, doxorubicin, cyclophosphamide; CRC, colorectal cancer; FOLFOX4/mFOLFOX6, folinic acid, 5-fluorouracil, oxaliplatin, NHL, non-Hodgkin's lymphoma; NSCLC, non-small cell lung cancer; R-CHOP/CHOP, cyclophosphamide, doxorubicin, vincristine, prednisone ± rituximab, RCV/PCVP, cyclophosphamide, vincristine, prednisone ± rituximab; RDI, relative dose intensity; TAC, docetaxel, cyclophosphamide, TC, docetaxel, cyclophosphamide; TCH, docetaxel, carboplatin, trastuzumab.

Figure 1 Distribution of RDI by standard tumor regimen cohort. Y-axis: percentage of patients; X-axis: RDI. Data were divided into bins as Bin 0: RDI <0.025; Bin 0.05: 0.025≤RDI<0.075; Bin 0.95: 0.925≤RDI<0.975; Bin 1: RDI≥0.975; observations with RDI >1 were counted in Bin 1.



Abbreviations: 5-FU, 5-fluorouracil; ABVD, doxorubicin, bleomycin, vinblastine, dacarbazine; AC, doxorubicin, cyclophosphamide; CRC, colorectal cancer; FOLFOX4/mFOLFOX6, folinic acid, 5-fluorouracil, oxaliplatin; NHL, non-Hodgkin's lymphoma; NSCLC, non-small cell lung cancer; R-CHOP/CHOP, cyclophosphamide, doxorubicin, vincristine, prednisone ± rituximab; RCVP/CVP, cyclophosphamide, vincristine, prednisone ± rituximab; RDI, relative dose intensity; TAC: docetaxel, doxorubicin, cyclophosphamide; TC, docetaxel, cyclophosphamide; TCH, docetaxel, carboplatin, trastuzumab.

Table 1 Standard Dose of Myelosuppressive Agents, Standard Number of Cycles, and Standard Cycle Length for Standard Tumor Regimens

Tumor Type	List of Standard Chemotherapy Regimens	Doxorubicin dose, mg/m ²	Cyclophosphamide dose, mg/m ²	Docetaxel dose, mg/m ²	Paclitaxel dose, mg/m ²	Carboplatin dose, AUC	Cisplatin dose, mg/m ²	Vinorelbine dose, mg/m ²	Vinblastine dose, mg/m ²	Dacarbazine dose, mg/m ²	5-FU dose, mg/m ²	Oxaliplatin dose, mg/m ²	Number of cycles	Duration of each cycle, days
Breast cancer	TC (4-cycle)		600	75									4	21
	TAC	50	500	75									6	21
	Dose-dense AC → q2wk paclitaxel (AC part)	60	600										4	14
	Dose-dense AC → q2wk paclitaxel (paclitaxel part)				175								4	14
	TC (6-cycle)		600	75									6	21
	TCH			75		6							6	21
	AC → qwk paclitaxel (AC part)	60	600										4	21
	AC → qwk paclitaxel (paclitaxel part)				80								12	7
	Dose-dense AC	60	600										4	14
	AC	60	600										4	21
	Dose-dense AC → qwk paclitaxel (AC part)	60	600										4	14
	Dose-dense AC → qwk paclitaxel (paclitaxel part)				80								12	7
	Ovarian cancer	AC → q3wk paclitaxel (AC part)	60	600										4
AC → q3wk paclitaxel (paclitaxel part)					175								4	21
AC → docetaxel (AC part)		60	600										4	21
AC → docetaxel (docetaxel part)				100									4	21
Carboplatin, paclitaxel					175	6							6	21
Carboplatin, paclitaxel					200	6							4	21
Cisplatin, vinorelbine ^a							100	100					4	28
FOLFOX ^{4b}											2000	85	12	14
mFOLFOX ^{6b}											2800	85	12	14
5-FU (q8wk)											3000		4	56
Hodgkin lymphoma	ABVD ^a	50							12	750			6	28
NHL	R-CHOP/CHOP (q3wk)	50	750										6	21
	RCVP/CVP		750										6	21

Abbreviations: 5-FU, 5-fluorouracil; ABVD, doxorubicin, bleomycin, vinblastine, dacarbazine; AC, doxorubicin, cyclophosphamide; CRC, colorectal cancer; FOLFOX⁴/mFOLFOX⁶, folinic acid, 5-fluorouracil, oxaliplatin; NHL, non-Hodgkin lymphoma; NSCLC, non-small cell lung cancer; R-CHOP/CHOP, cyclophosphamide, doxorubicin, vincristine, prednisone ± rituximab; TAC, docetaxel, doxorubicin, cyclophosphamide; TC, docetaxel, cyclophosphamide; TCH, docetaxel, carboplatin, trastuzumab.

^aIn regimens with multiple administrations of an agent on different days of a cycle, total standard dose for the agent during the cycle is presented.

^bFolinic acid was not included in calculations of dose intensity because it is not myelosuppressive.